

Washer Extractors WS 5100 and WS 5140

Load capacity 10 kg and 14 kg

Miele
PROFESSIONAL

WRAS
APPROVED
PRODUCT



Excellent design and construction Typically Miele



Miele's latest 10 kg and 14 kg washer extractors

The WS 5100 and WS 5140 washer extractors are ideally suited to a wide range of establishments including hotels and guesthouses, restaurants and catering businesses, sports and activity centres and professional laundries.

The sluice and thermal disinfection programme also makes them suitable for healthcare applications.

Multitronic plus styling

Miele's WS 5100 and WS 5140 washer extractors are equipped with state of the art electronic microprocessor "Multitronic plus" controls. They have 23 fixed programmes which can also be modified to suit individual requirements.

Operation

Wash programmes and temperatures are easy to select using the single rotary dial control on the front panel of the machine. Additional options can also be selected at the simple touch of a button.

Easy drum access

The drum aperture has a 370 mm diameter and the door can be opened to 140° making these machines very easy to load and unload. Plinths are also available for raising the machine to an ergonomic loading height.

Detergent dispensing

The detergent dispenser is conveniently located in the lid of the machine and has four compartments for easy dosing of detergent for the pre-wash and the main wash, fabric conditioner and chlorine-free bleaching agents.

The WS 5100 and WS 5140 are supplied complete with electronic interface and mechanical connections ready to connect to external detergent dosing systems (not supplied).

Plumbing requirements

A stopcock with $\frac{3}{4}$ " threaded union must be provided on site for the water inlet connection. The machines are fitted with a drain valve and hose for connection to the on-site drainage system, either via a floor gully or Ø 70 mm stab stack.



Water Regulations

The water distribution system incorporates a Type AB air gap to provide the highest level of protection against back-flow contamination. This enables the machines to be connected to mains water, even in Fluid Category 5 applications, e.g. nursing homes and hospitals, in accordance with Water Supply (Water Fittings) Regulations 1999 and Water Byelaws 2000 Scotland.

Tested and approved by the Water Regulations Advisory Scheme (WRAS). Certificate number 0112122.

Quality

These machines are designed with Miele's customary attention to detail and built using the very best of materials and technology to ensure that you benefit from many years of excellent service from your machines.

Construction

The drum, suds container, machine front and lid are all made from rust-free stainless steel. The sides are blue powder coated galvanised steel.

Multitronic plus

State of the art technology

Operation

Simplicity of operation is the key in the design and layout of the WS 5100 and WS 5140. The controls are clearly identified and easy to operate, the digital display shows both time and temperature, and in addition LED lights chart the wash programme sequence. Additional options can also be selected at the simple touch of a button.

For applications where the standard wash programmes require modification, the Multitronic plus controls offer the flexibility to cope. For example, temperature holding times in both pre-wash and main wash can be changed. For non-healthcare applications where the sluice programme is not required, then this can be reprogrammed to provide a separate rinse and spin.



Door opening angle 140°



Door aperture 370 mm



Control panel



4-compartment detergent dispenser

The WS 5100 and WS 5140 Washer extractors



WS 5140 mounted on optional plinth VG 5015

WS 5100

Maximum dry load: 10 kg
Drum volume: 100 litres
Spin speed: 1,000 rpm
G-factor: 330

Controls

Multitronic plus electronic controls
23 fixed programmes
Programme modifications possible
Additional options available via programme function buttons
Programme sequence display
Temperature and time left display
9.5 hour Delay Start option

Features

Heater elements strategically located to avoid build-up of fluff
Large surface area for quicker heating up times
Drain valve directly connected to suds container
Cold and hot water connection

Heating

Electric

Detergent dispensing

4-compartment dispenser in the machine lid

Construction

Freestanding washer extractor
Front and lid in stainless steel
Sides are blue, powder coated galvanised steel
Suds container and drum in stainless steel
Drum perforations smooth and snag-free
Large, wide opening drum door without bellows seal
All plastic components are coded for future recyclability

H x W x D: 1160 x 805 x 910 mm

WS 5140

Maximum dry load: 14 kg
Drum volume: 140 litres
Spin speed: 750 rpm
G-factor: 186

Controls

Multitronic plus electronic controls
23 fixed programmes
Programme modifications possible
Additional options available via programme function buttons
Programme sequence display
Temperature and time left display
9.5 hour Delay Start option

Features

Heater elements strategically located to avoid build-up of fluff
Large surface area for quicker heating up times
Drain valve directly connected to suds container
Cold and hot water connection

Heating

Electric

Detergent dispensing

4-compartment dispenser in the machine lid

Construction

Freestanding washer extractor
Front and lid in stainless steel
Sides are blue, powder coated galvanised steel
Suds container and drum in stainless steel
Drum perforations smooth and snag-free
Large, wide opening drum door without bellows seal
All plastic components are coded for future recyclability

H x W x D: 1160 x 805 x 1060 mm

Test marks and certification

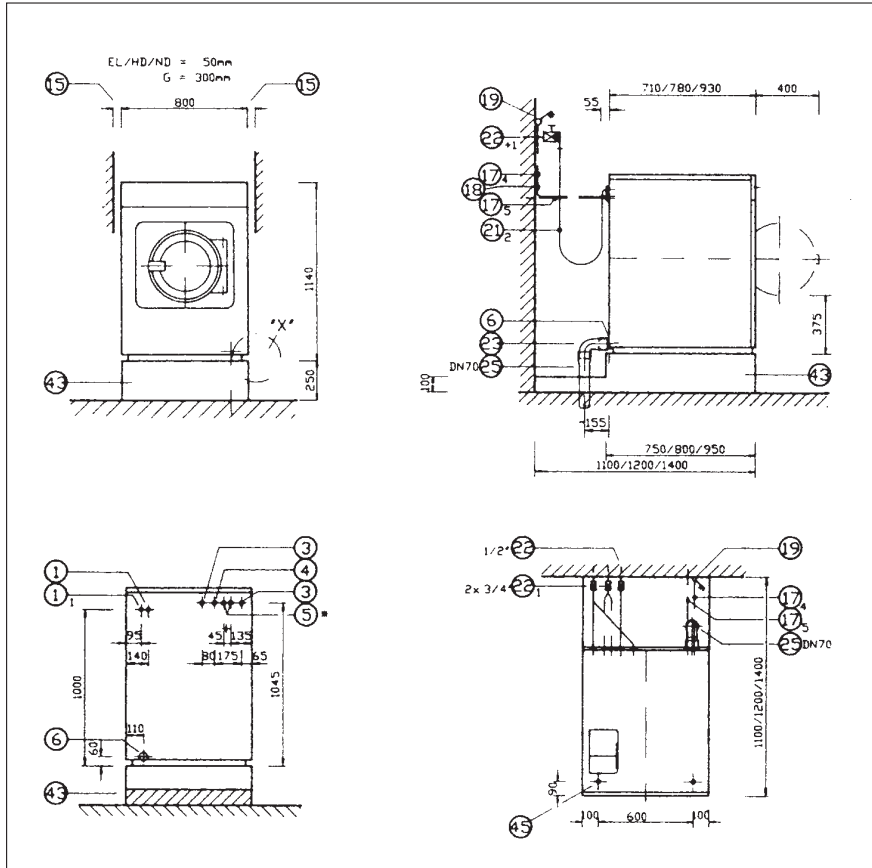
VDE/CCA
DVGW water
CE Ident Nr
Drip water proof
EMV-CE



Technical data

Technical data		WS 5100	WS 5140
Capacity	kg	10	14
Drum volume	Litres	100	140
Max. spin speed	rpm	1000	750
g-factor		330	186
Residual moisture	%	55	64
Door opening	Ø mm	370	370
Controls		Multitronic	Multitronic
Programme duration* (EL)	min	41	42
Energy consumption*	kWh	2.1	2.2
Water consumption*	Litres	184	240
Water consumption per kg dry laundry*	Litres	18.4	17.2
Cold/Hot water connection		2 x 3/4"/1 x 3/4"	2 x 3/4"/1 x 3/4"
Hard water connection		Optional	Optional
Drainage via drain valve		DN 70	DN 70
Electrical connection		3 N AC 380-400 V, 50 Hz	3 N AC 380-400 V, 50 Hz
Fuse rating	A	3 x 16	3 x 25
Total rated load	kW	9.35	15.4
Heater rating	kW	9.0	15.0
H/W/D	mm	1160/805/910	1160/805/1160
Net weight:	kg	262	311
<p>* Cottons 60°C (with hot water connection) in accordance with DIN 60456. Further details available on request.</p>			

Technical drawings



- 1 Mains power entry point
- 3 Cold water connection
- 4 Hot water connection
- 5 Hard water connection
- 6 Drain connection
- 15 Min. gap required
(EL/Steam = 50 mm, Gas = 300 mm)
- 17 Mains cable (not supplied)
- 18 Cable channel
- 19 Safety cut-out device
- 21 Earthing connection
- 22 Stopcock
- 23 Drain elbow
- 25 Standpipe
- 43 Plinth
- 45 Anchor fixing location

The complete laundry package from Miele



All under one roof

Miele offer a wide range of laundry machines and accessories so you can equip your laundry operation all from one source.

From washer-extractors and tumble dryers to rotary ironers and a whole host of accessories to lighten the load, Miele is certain to have just the right combination for your needs.

Tumble dryers

Miele also offer a matching 10 kg – T 6251 and 14 kg – T 6351 tumble dryer with Troctronic controls to complement the WS 5100 and WS 5140 washer extractors.

The economical air-recycling system ensures that 60% of the air is constantly passed back through the laundry to economise on the amount of energy used to dry the laundry.

The tumble dryers are available with choice of gas or electric heating, and feature reverse action drums with electronic sensing for fuss-free drying.

The tumble dryers are all manufactured with blue powder coated front and sides as standard, but can be supplied at extra cost in stainless steel if required.

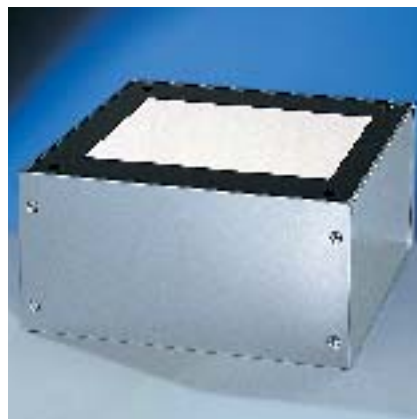
Miele rotary ironers

To provide your laundry with a professional finish Miele also has a wide range of rotary ironers with capacities ranging from 10 kg per hour with 25% residual moisture, to 272 kg per hour with 50 % residual moisture. With roller diameters ranging from 160 mm to 600 mm and roller lengths from 850 mm to a massive 3,300 mm, there is bound to be one to suit your needs!



Dispenser system

A mobile dispenser pump system, holding up to 3 dispenser pumps, is available for use with washer extractors to ensure easy, economical dosing of liquid detergent.



Plinths

Miele offer a range of plinths to ensure that the machine is installed at a convenient height for loading and unloading.

- **WS 5100 on:**
UG 5009 (closed)
UO 5009 (open)
Height 25 cm

- **WS 5140 on:**
UG 5015 (closed)
UO 5015 (open)
Height 25 cm



Count on Miele expertise

In the commercial environment, downtime is more than just an inconvenience. It can threaten the smooth running and cost of your operation, so keeping equipment functioning is our prime objective.

Our fully trained engineers provide maintenance cover nationwide. So, no matter where you are in the UK, expert assistance is only a phone call away. And, because you depend on your Miele equipment, we will get an engineer to you promptly to minimise inconvenience.

Regular technical training ensures that every engineer is familiar with the complete Miele range of commercial machines.

So, in the unlikely event of a fault, you can rest assured that your machine will be repaired and serviced by experts.

Miele peace of mind

The Miele name is synonymous with the highest standards of quality and reliability. Our investment in design and technology ensures that all Miele commercial equipment has been built to work economically and efficiently, even in the most demanding working environments.

Because you rely on Miele commercial machines day in and day out, you know that downtime is costly and inconvenient. Miele reliability is well known. However, the Miele Total Protection Plan gives you that extra reassurance by providing the option of either two or four years parts and labour cover beyond the initial guarantee period.

Full Parts and Labour Cover

This scheme covers all parts and labour with nationwide service cover carried out by Miele's own engineers or Miele trained, authorised service dealers.

United Kingdom
Miele Company Ltd.
Fairacres, Marcham Road,
Abingdon, Oxon OX14 1TW
Telefon (01235) 554455
Telefax (01235) 554477
Internet: www.miele.co.uk
E-Mail: info@miele.co.uk

Australia
Miele Australia Pty.Ltd.
1 Gilbert Park Drive
Knoxfield VIC 3180
Telefon (03) 97 64 71 30
Telefax (03) 97 64 71 49
Internet: www.miele.com.au

Germany
Miele & Cie. KG
P.O. Box
33325 Gütersloh
Internet: www.miele.de

Ireland
Miele Ireland Ltd.
Broomhill Road
Tallaght
Dublin 24
Tel.: (01) 461 07 10
Telefax: (01) 461 07 97

Internet: www.miele.ie
Email: info@miele.ie

Miele
PROFESSIONAL

Foreign Sales Companies

- (A) Miele Ges.mbH., Wals/Salzburg
- (B) Miele N.V., Mollem
- (CDN) Miele Limited,
Richmond Hill/Ontario
- (CH) Miele A.G.,
Spreitenbach/Zürich
- (CZ) Miele spol. sr.o., Brno
- (D) Miele & Cie. KG, Gütersloh
- (DK) Miele A/S,
Glostrup/Kopenhagen
- (E) Miele S.A., Alcobendas/Madrid
- (F) Miele S.A.,
Le Blanc-Mesnil/Paris
- (FIN) Miele Oy, Vantaa/Helsinki
- (GR) Miele-Hellas GmbH,
Psychiko-Athen
- (H) Miele Kft., Budapest
- (HK) Miele Hong Kong Ltd.,
Hong Kong
- (I) Miele s.r.l., Appiano/Bolzano
- (IRL) Miele Ireland Ltd., Dublin
- (J) Miele Japan Corp.,
Shibuya/Tokyo
- (L) Miele S.à r.l.,
Luxemburg-Gasperich
- (MEX) Miele S.A. de C.V., Mexico City
- (N) Miele AS, Rud/Oslo
- (NL) Miele Nederland b.v., Vianen
- (P) Miele Portuguesa, Lda.,
Carnaxide/Lissabon
- (PL) Miele Sp. z o. o., Warschau
- (RU) 000 Miele CIS, Moskau
- (S) Miele AB, Solna/Stockholm
- (SGP) Miele Pte. Ltd., Singapur
- (TR) Miele Elektrikli Ltd. Sti.,
Levent/Istanbul
- (USA) Miele Appliances Inc.,
Princeton/New Jersey
- (ZA) Miele Pty. Ltd.,
Randburg/Johannesburg

Every effort has been made to ensure that the information given in this brochure is correct at the time of printing. However, due to continuous product improvement, Miele reserves the right to make changes to products and technical data without prior notice.

Protecting the environment:
This brochure is printed on paper
bleached without the use of chlorine.